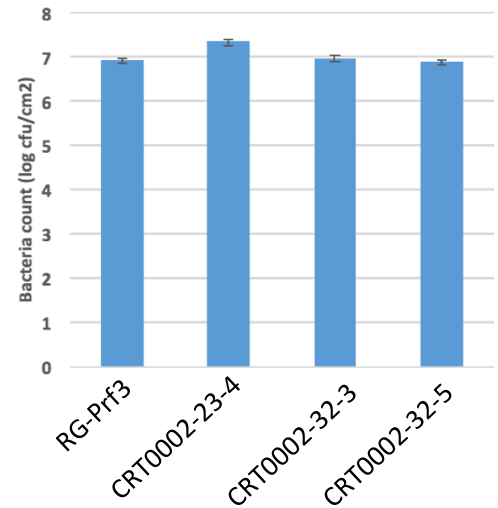
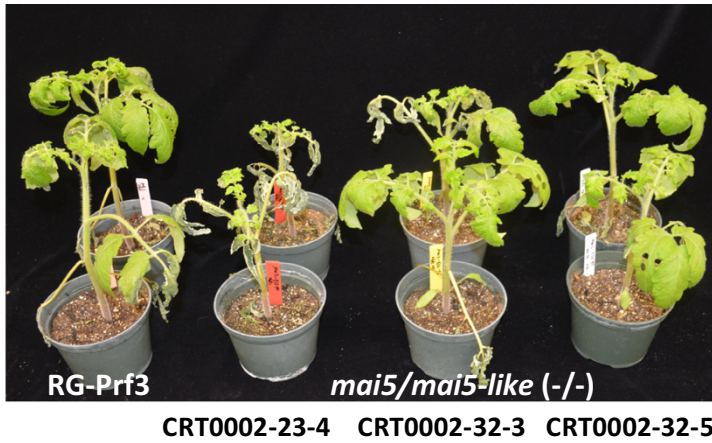


Disease assay

- **Vacuum infiltration with DC3000dd (5x10⁴ cfu/ml)**

The Mai5/Mai5-like knockout event CRT0002-23-4 showed increased susceptibility to DC3000dd while other events showed similar susceptibility compared to RG-Prf3.



- **Vacuum infiltration with DC3000ddd (5x10⁴ cfu/ml)**

No significant difference was observed among Mai5/Mai5-like knockout mutants and wide type RG-Prf3.

