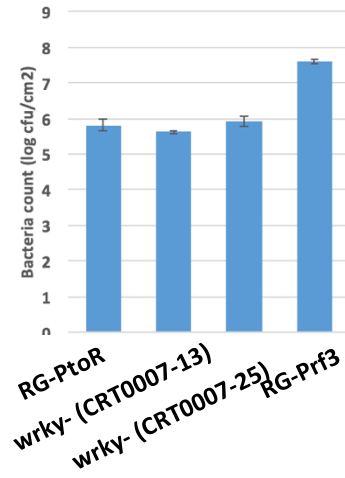
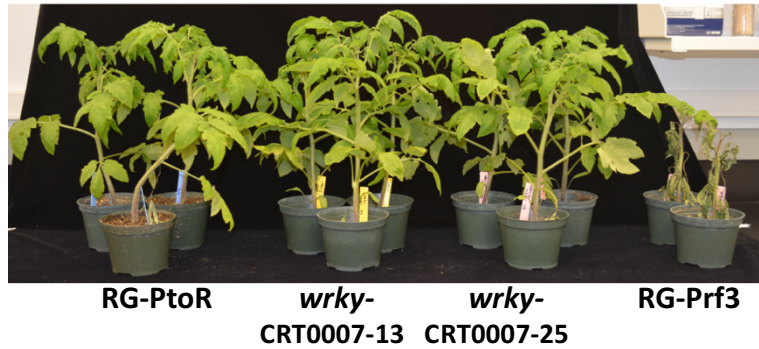


## Disease assay

- **Vacuum infiltration with DC3000 ( $5 \times 10^5$  cfu/ml)**

No significant changes of immunity response were observed between WRKY knockout mutants and wide type RG-PtoR



- **Hypersensitive response (HR) assay**

Plants were *Agro*-infiltrated with empty or constitutive active AvrPtoB<sub>1-387</sub>. WRKY knockout mutants still showed cell death as wide type RG-PtoR.

