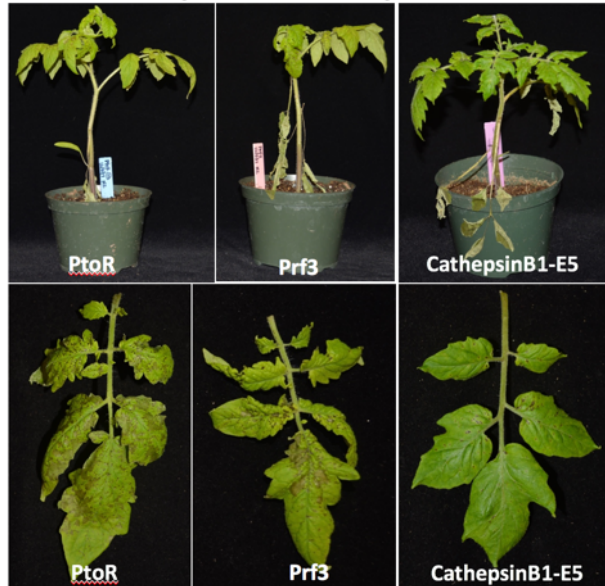


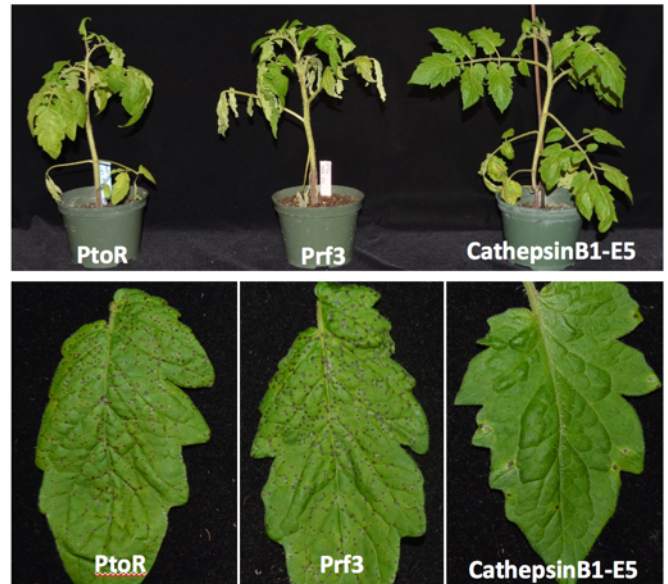
Disease assay

- CathepsinB1 knockout mutant was more resistance to DC3000dd and T1 strains, but was as susceptible as RG-PtoR to DC3000ddd and NY-T1 strains.

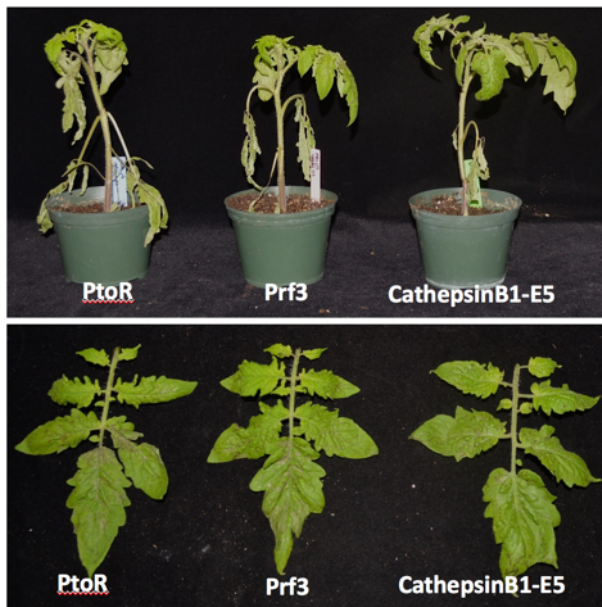
DC3000dd (5×10^4 cfu/ml)



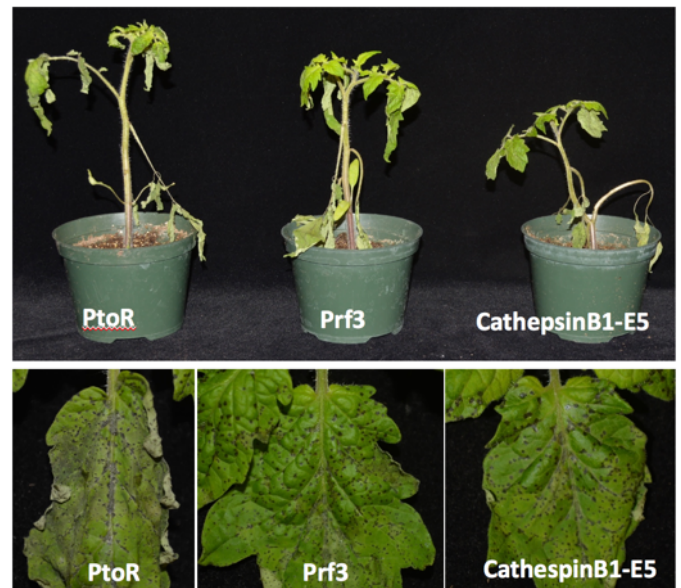
T1 (5×10^4 cfu/ml)



DC3000ddd (5×10^4 cfu/ml)



NYS-T1 (7×10^4 cfu/ml)



- Growth curve confirms that CathepsinB1 knockout mutant was more resistance to DC3000dd and T1 strains.

